

Upload email data files to S3 bucket

Choose the S3 bucket

Option 1. Uploading to a Bucket in your account

We highly recommend that the raw data files are uploaded to an S3 bucket in your AWS account.

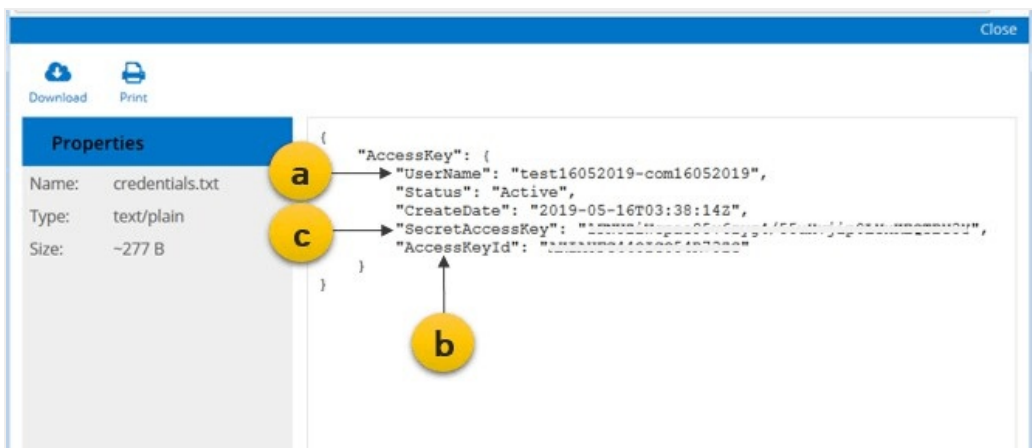
The steps to do so are as follows:

1. [Create an AWS account](https://docs.mithi.com/home/faqs-aws-s3#how-do-i-get-an-aws-account-) (<https://docs.mithi.com/home/faqs-aws-s3#how-do-i-get-an-aws-account->)
2. [Create a S3 bucket in a region supported by LegacyFlo](https://docs.mithi.com/home/faqs-aws-s3#how-do-i-create-a-s3-bucket-) (<https://docs.mithi.com/home/faqs-aws-s3#how-do-i-create-a-s3-bucket->)
3. [Grant List and Read access to LegacyFlo](https://docs.mithi.com/home/faqs-aws-s3#how-do-i-grant-access-to-my-s3-bucket-to-legacyflo-) (<https://docs.mithi.com/home/faqs-aws-s3#how-do-i-grant-access-to-my-s3-bucket-to-legacyflo->)
4. Create a folder called "Vaultastic". Copy the data files to be migrated into this folder.

Option 2: Uploading to a Bucket in Mithi account

The other option is to upload them to the S3 folder created for you by Mithi. The credentials for this would have been shared through email when your first Vaultastic or SkyConnect domain was provisioned.

Sample Credentials file



Note: Data in this S3 bucket is held only till the migration is completed. Post migration this raw data will be deleted.

Choose the upload method

With AWS, there are more than one ways to upload data to a S3 bucket. Two recommended options are the S3 browser for small data and the AWS Snowball for large data.

This document (<http://www.vaultastic.com/migration>) will help you decide on the right strategy.

Note: Any tools required to upload data to the S3 bucket, including those recommended have to be purchased by you, the customer.

Option 1: Using the S3 browser to upload the files

There are 2 steps in uploading the raw data using the S3 browser

- I. Configure the S3 browser on your machine and create an external bucket
- II. Upload email data files

I: Configure the S3 browser on your machine and create an external bucket

1. Download the S3 browser from the site <https://s3browser.com>

2. Launch the S3 browser App.

An **Add New Account window** displays on the screen.

3. Provide the s3 bucket credentials.

a. Enter **Account Name**.

b. Provide the **Access key ID**

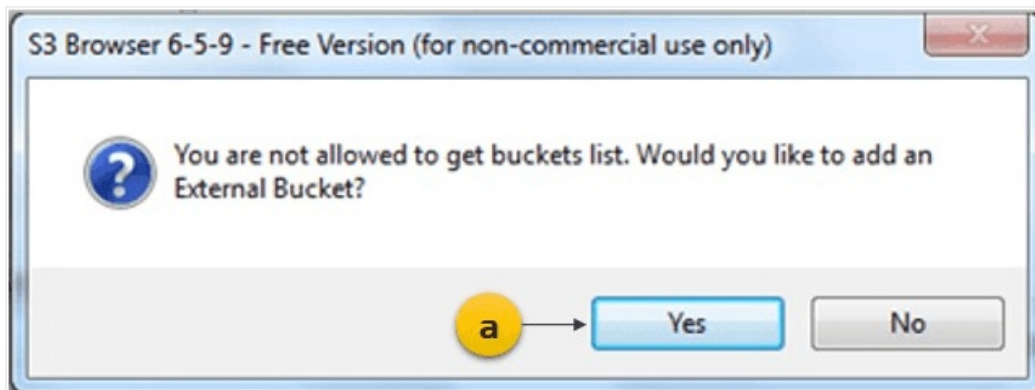
c. Enter the **Secret Access Key**

d. Select to enable the **Use secure transfer (SSL/TLS)** option

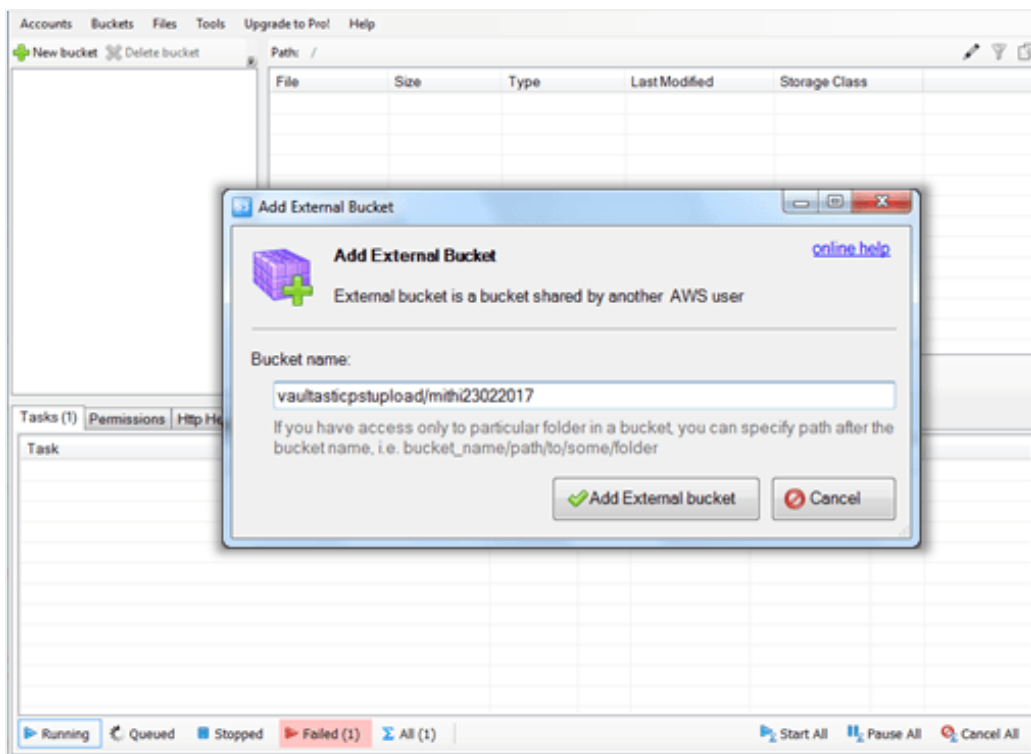
e. Click the **Add New Account** button to proceed

4. A warning message displays on the screen saying “You are not allowed to get buckets list. Would you like to add an External Bucket? ”

a. Click **Yes** to add an external bucket

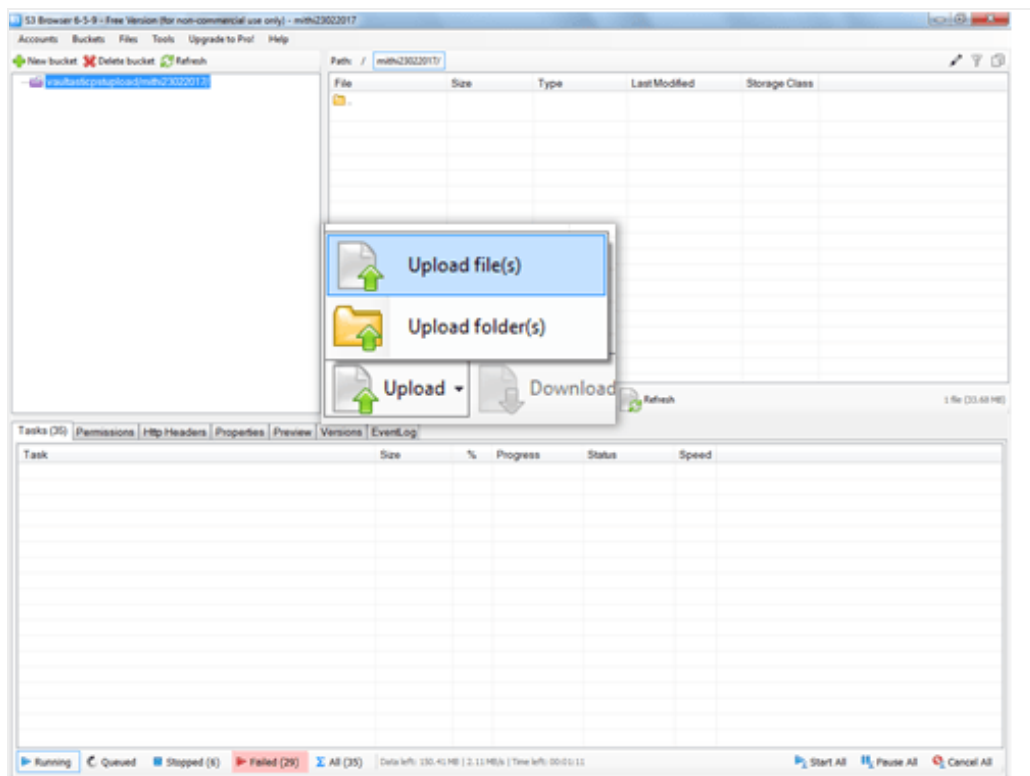


5. On the pop-window, enter the bucket name in the format **vaultasticpstupload/{Account name}** . DO NOT append the bucket name with the "/" character. For example, vaultasticpstupload/test-com16052019. Click the **Add External Bucket** button to continue.

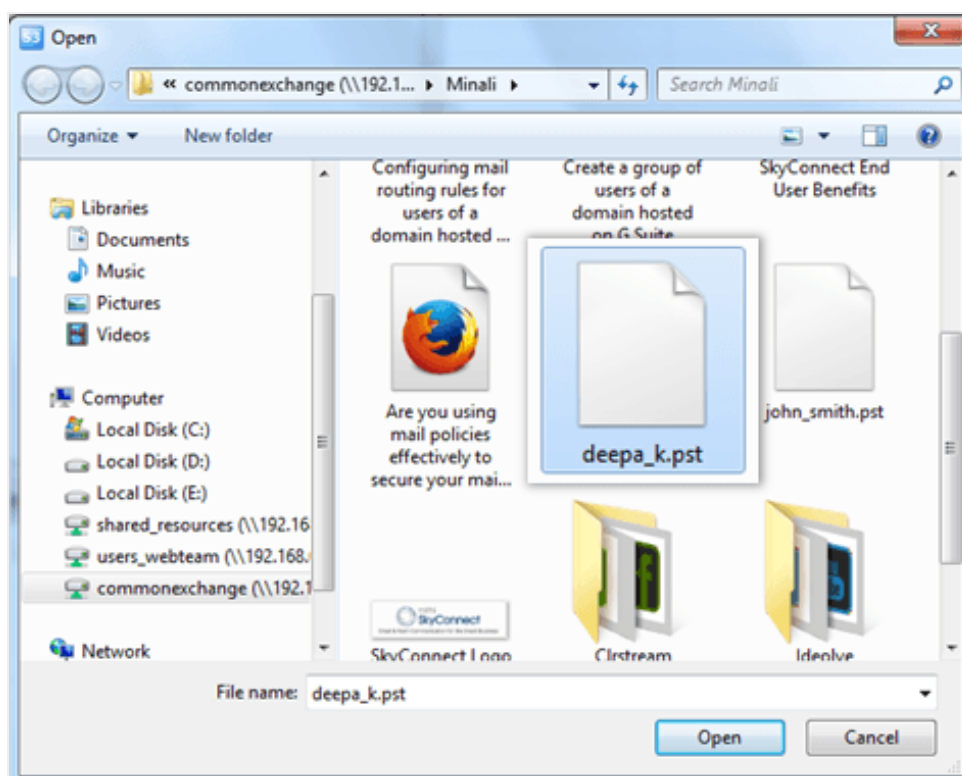


II: Upload email data files

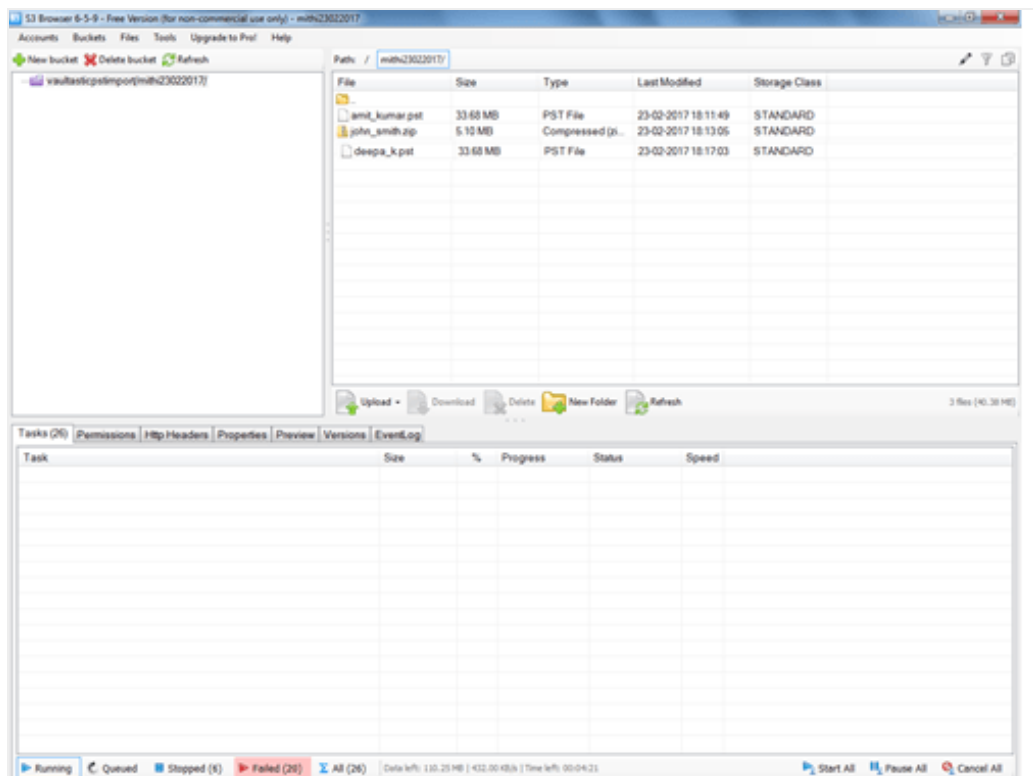
1. Launch the S3 browser
2. Click the **Upload** button and select the **Upload file(s)** option.



3. Locate the email data files to be uploaded on your machine.
4. Click the **Open** button to upload.



You can view a list of all the uploaded files.



Option 2: Using the AWS Snowball

When migrating large volumes of data. It is advisable to use the AWS Snowball to transport data from your data center to the AWS data center in the selected region. Refer to the AWS documentation on ordering and using the Snowball.