

Overview

Table of Contents

[Overview](#)

[Mail flow and the checks at different points of contacts](#)

[Checks to be done at the different points of contact](#)

[Mail flow](#)

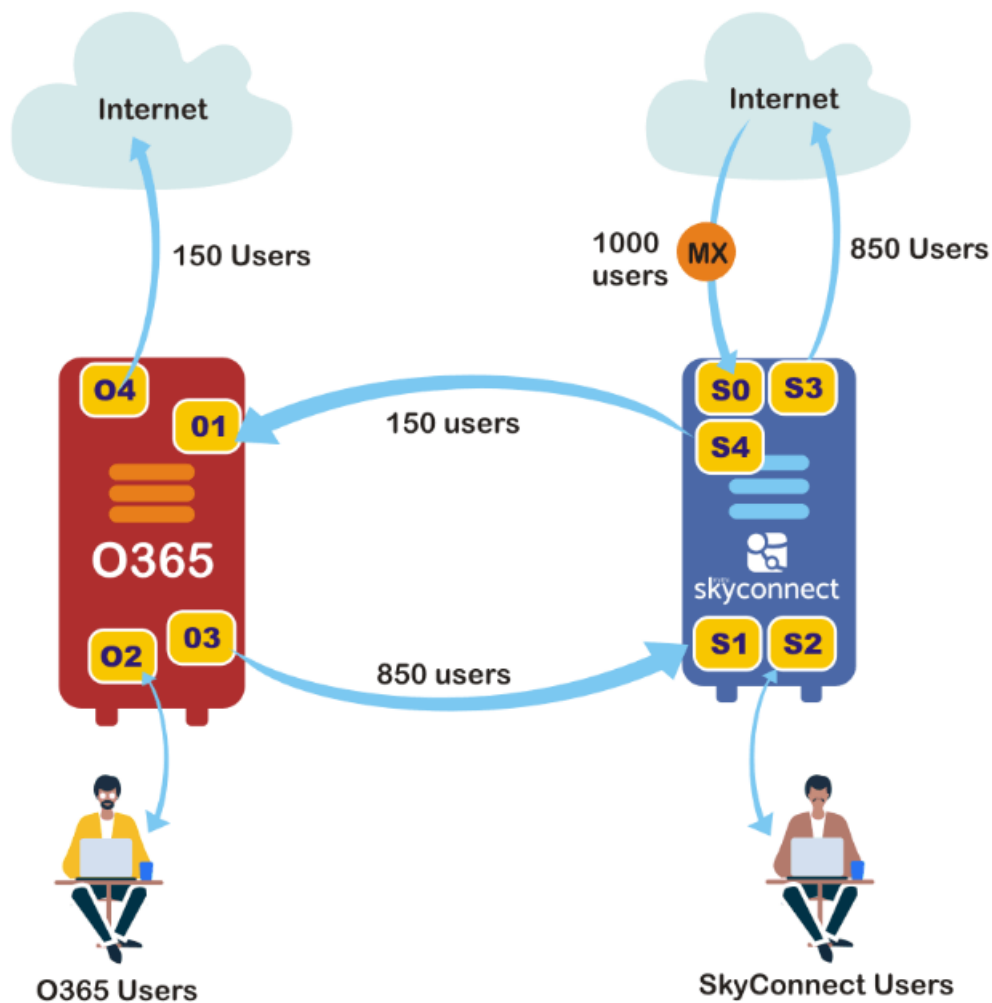
Overview

Consider an organization which has a high number of users. In this organization, a small minority (usually the top management) need all the collaboration features offered by O365 whereas the rest of the users mainly use only email. In such an organization, there is a requirement to host the email infrastructure of a company across 2 different solutions, such that both the solutions share the same SMTP address space and the company can divide their mailboxes across the two solutions.

For example, in an organization with 1000 users, a typical co-existence between Mithi SkyConnect and Microsoft Office 365 will allow the organization to host 100 users on O365 and 900 on Mithi SkyConnect, sharing a common domain name in their email ids, and with seamless mail flow between the users of both systems.

Mail flow and the checks at different points of contacts

The diagram below shows the mail flow and the point of contacts for a co-existence setup between SkyConnect and O365.



Note: Though the diagram shows MX records pointing to the SkyConnect server on connection point S0, the co-existence can be configured where the MX will point to the O365 setup as well.

Checks to be done at the different points of contact

Refer to the table below for the recommended checks to be done at the different points of contact depicted in the image above.

	Point Of Contact	Scope	Quarantine Report
O365	O1	As per O365 policies. Incoming Mail is assumed clean	NA
	O2	As per O365 policies. Scan for Virus at the minimum	NA
	O3	No checks done. Clean mail expected	NA

	Point Of Contact	Scope	Quarantine Report
	O4	No checks done. Clean mail expected	NA
SkyConnect	S0	Spam, Virus, Malware for all users Note: The MX can point to O365, in which case the spam, virus, malware protection for all users is provided the O365 system.	Yes (if MX points to SkyConnect. If MX points to O365, refer to the O365 documentation)
	S1	Virus check (optional)	NA
	S2	DDOS, Rate control, Auth, Spoof, Virus	NA
	S3	No checks done. Clean mail expected	NA
	S4	No checks done. Clean mail expected	NA

Mail flow

The table below explains the mail flow between SkyConnect and O365 through the point of contacts shown in the image above.

Source	Target	Flow
External email id	SkyConnect user	S0=>LD (Local Delivery)
External email id	O365 user	S0=>S4=>O1=>LD
SkyConnect user	SkyConnect user	S2=>LD
SkyConnect user	O365 user	S2=>S4=>O1=>LD
SkyConnect user	External email id	S2=>S3=>ED (External delivery)
O365	SkyConnect user	O2=>O3=>S1=>LD
O365	O365 user	O2=>LD
O365	External email id	O2=>O4=>ED