

# Step 4: Create a Send Connector Exchange 2007

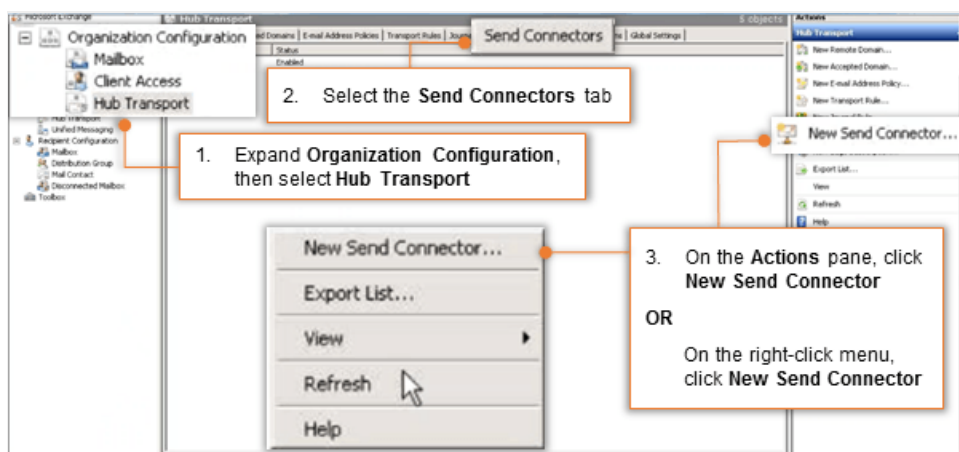
1. On the **Exchange Management Console**, expand **Organization** and then select **Hub Transport**.

2. Select the **Send Connector** tab.

3. On the **Actions** pane, click **New Send Connector**

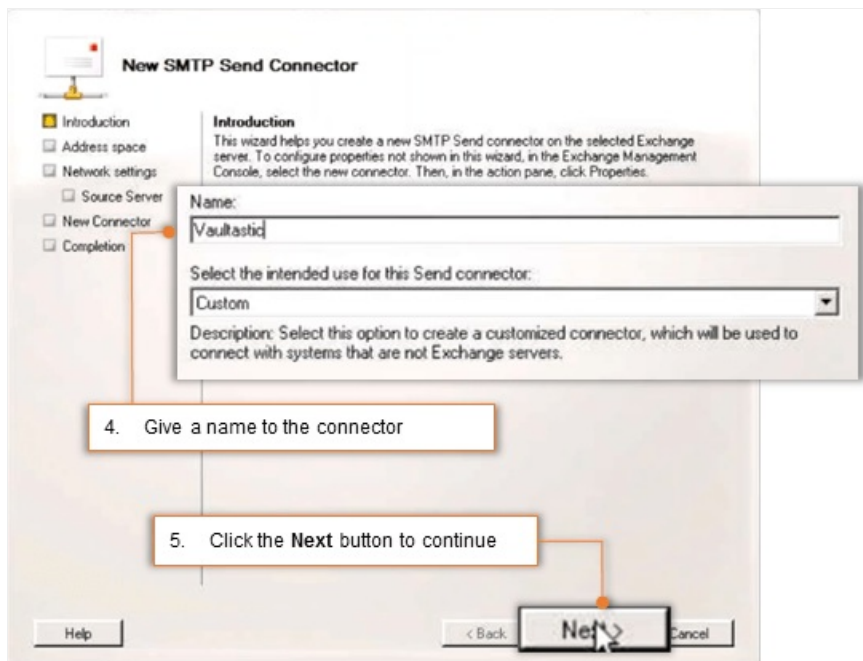
OR

On the **right-click** menu, click **New Send Connector**

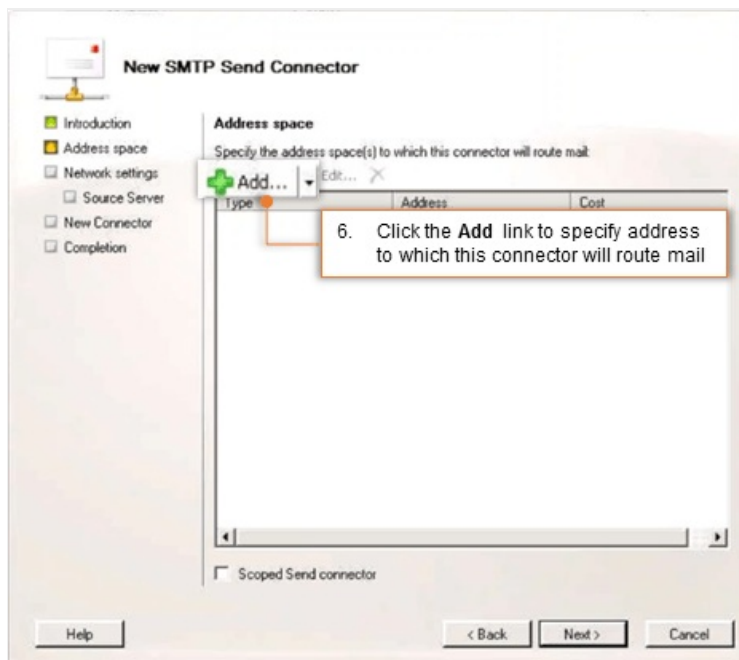


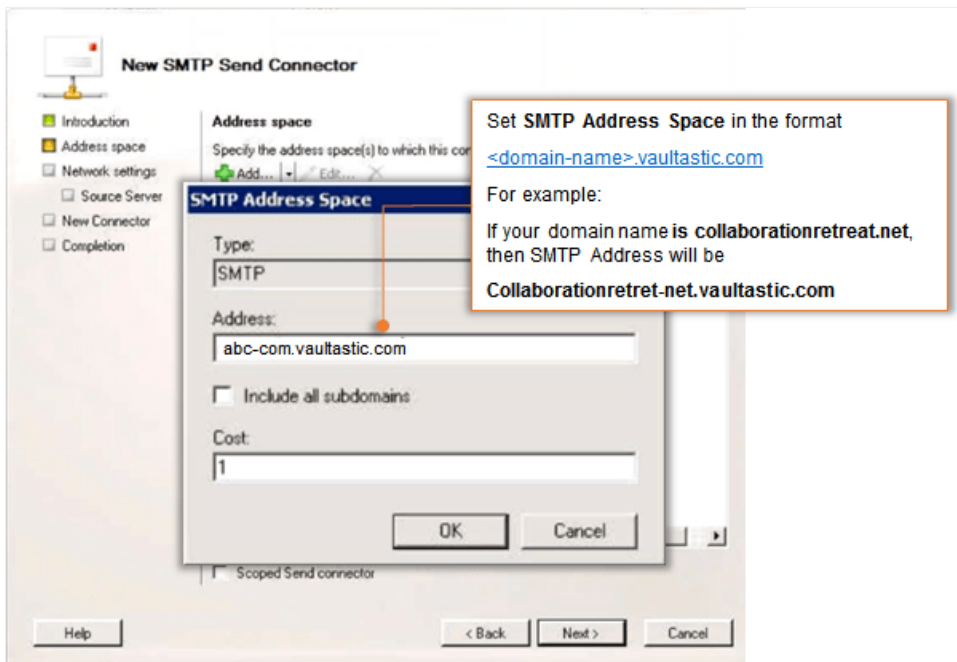
4. On the **New SMTP Send Connector** window, give a name to the connector which will help you to identify it easily. For example: Vaultastic.

5. Click the **Next** button to continue.



6. Click the **Add** link to specify address to which this connector will route mail.





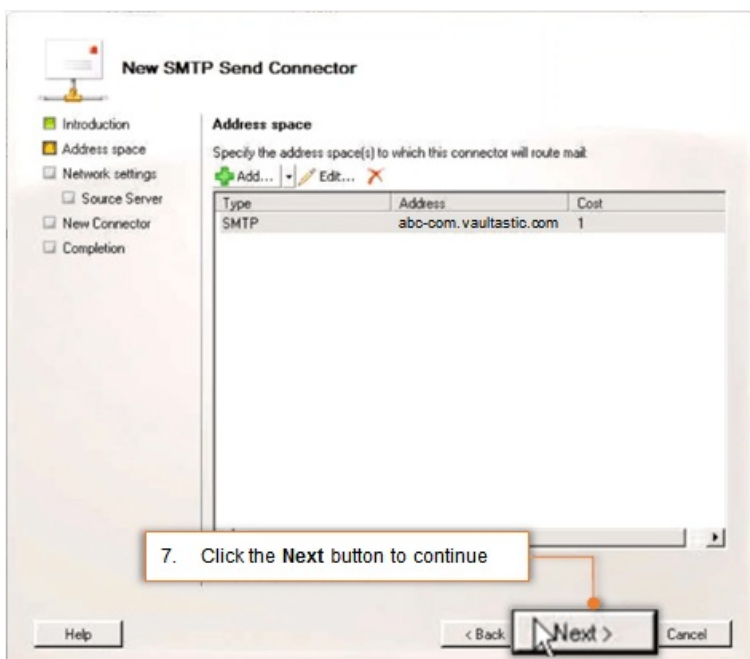
- Set SMTP Address Space in the format {domain-name}.vaultastic.com

For example:

If your domain name is `collaborationretreat.net`, then SMTP Address will be `collaborationretreat-net.vaultastic.com`

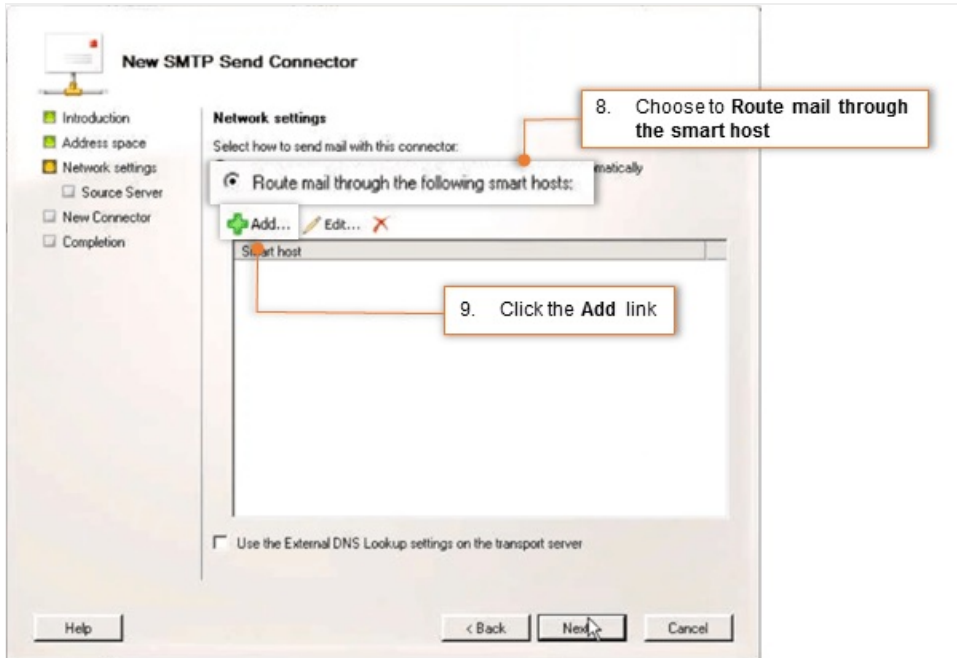
- Leave **include all subdomains** unchecked.
- Click the **OK** button to continue.

7. Click the **Next** button to continue.

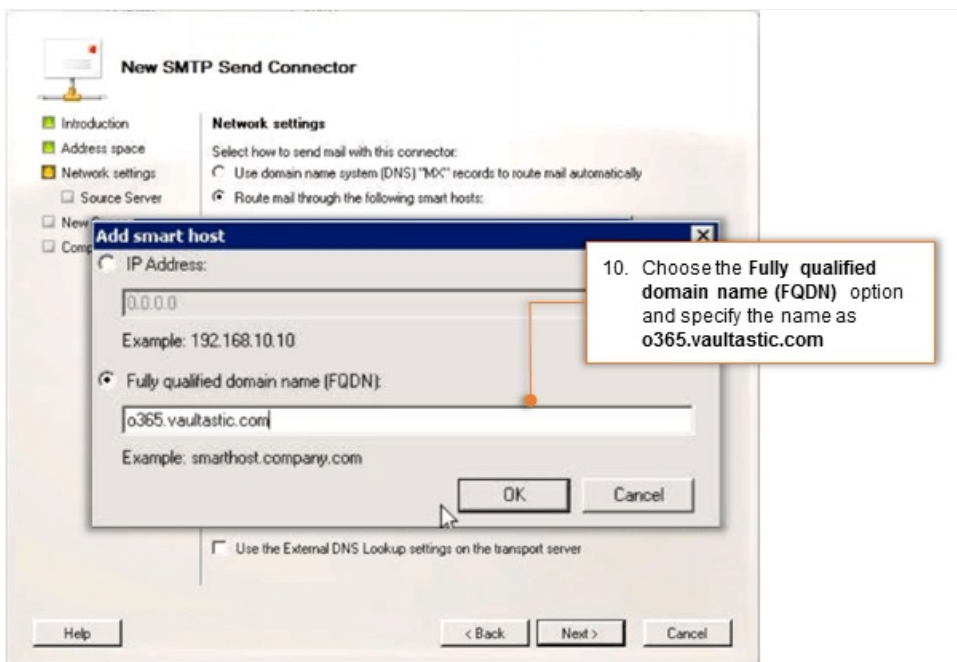


8. Select the **Route mail through the following smart hosts** option.

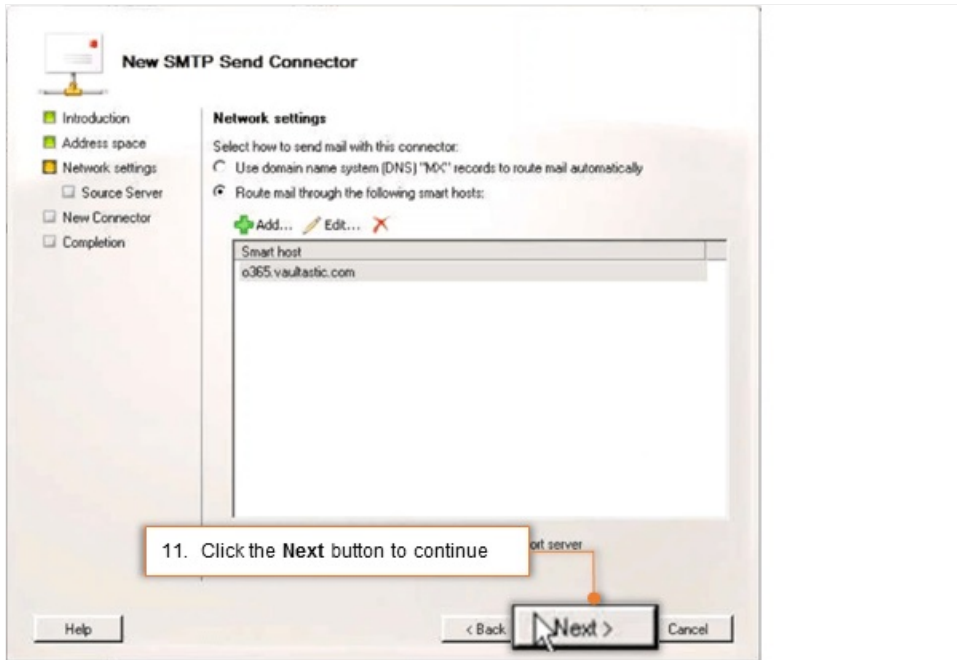
9. Click the **Add** link.



10. Select the **Fully qualified domain name (FQDN)** option and specify it as **o365-v4.vaultastic.com** and click **OK**

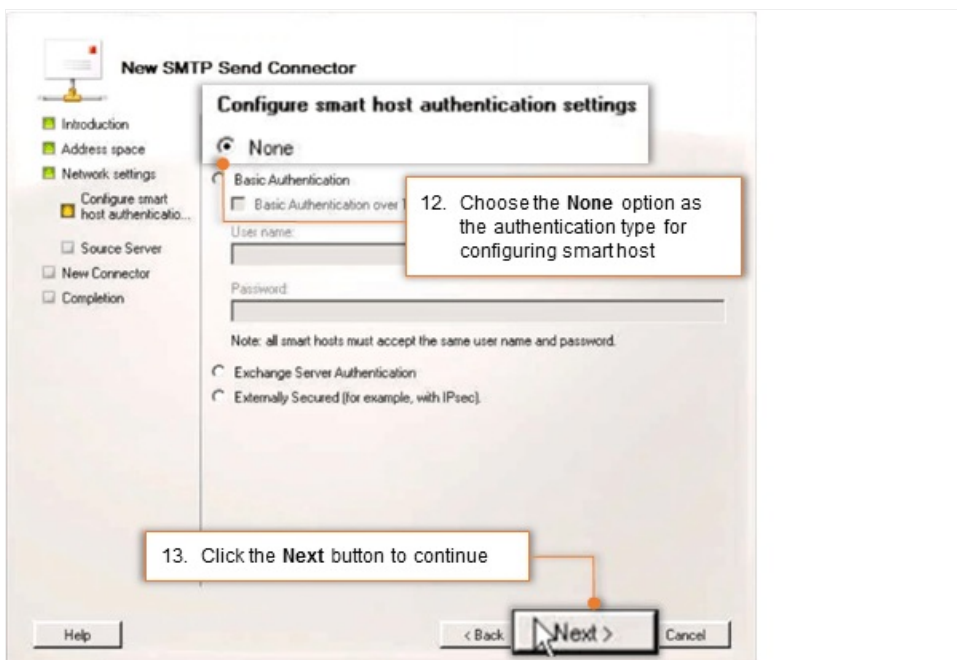


1. Click the **Next** button to continue.



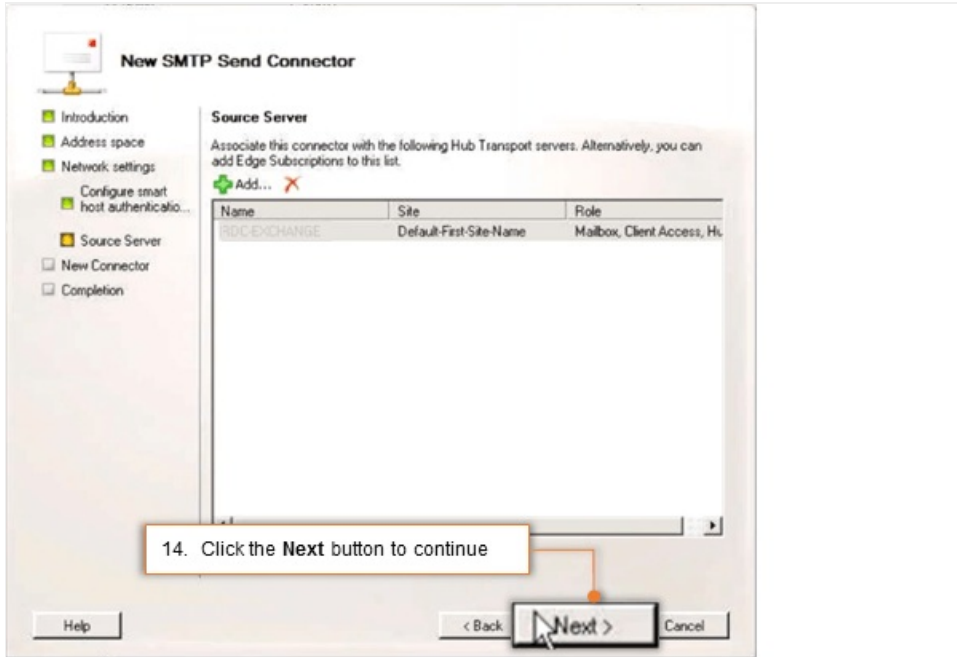
2. Leave **smart host authentication** settings as **None**.

3. Click **Next**

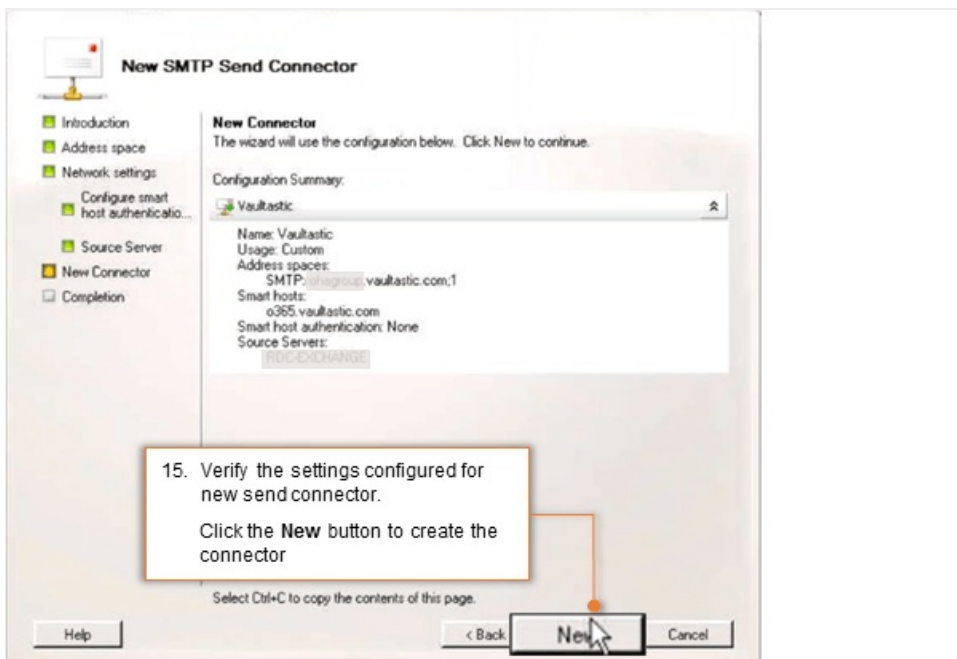


4. Choose the hub transport servers that apply (as necessary).

Click the **Next** button to continue.



5. **Verify** the settings configured for new send connector and click the **New** button to create the connector.



6. Click the **Finish** button to exit the wizard.

